

Activity ID	Responsibility	Activity Name	Original Duration	Start	Finish	Total Float	Calendar	2022												2023											
								Dec	Jan	Feb	Mar	Apr	May	Jun	Jul	Aug	Sep	Oct	Nov	Dec	Jan	Feb	Mar	Apr	May	Jun	Jul	Aug			

Critz Lane Improvements - 12-13-21 Pre-Construction Schedule

PROJECT START-UP / CLOSE-OUT

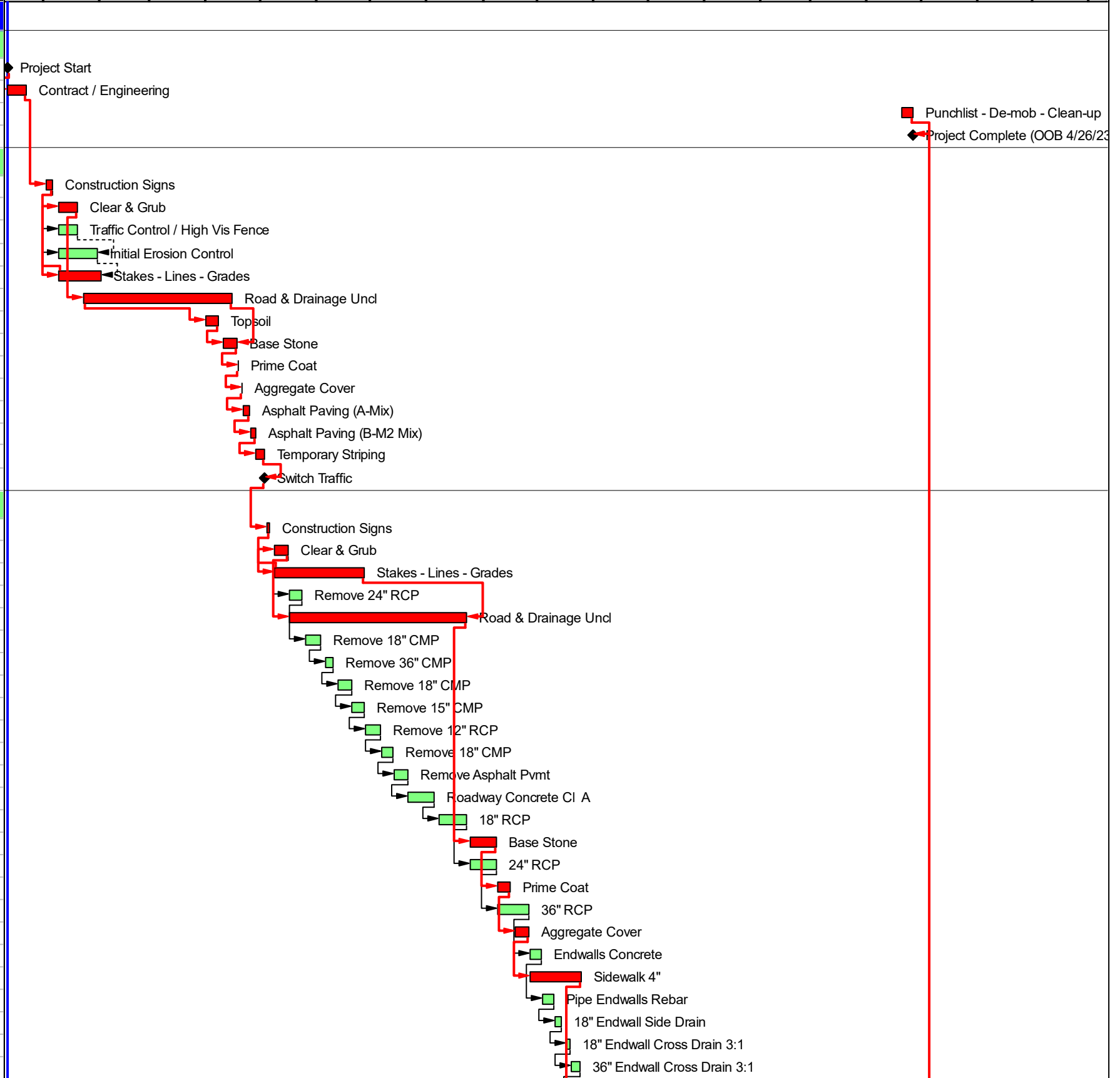
9000	RGI	Project Start	0.0	13-Dec-21		35.0	Standard 5d TN
9005	RGI	Contract / Engineering	9.0	13-Dec-21	23-Dec-21	59.0	Admin 5d
9980	RGI	Punchlist - De-mob - Clean-up	5.0	20-Apr-23	26-Apr-23	0.0	Standard 5d TN
9990	RGI	Project Complete (OOB 4/26/23)	0.0		26-Apr-23	0.0	Standard 5d TN

PHASE 1

1005	RGI	Construction Signs	2.0	03-Jan-22	06-Jan-22	35.0	Standard 5d TN
1015	RGI	Clear & Grub	5.0	10-Jan-22	20-Jan-22	35.0	Standard 5d TN
1006	RGI	Traffic Control / High Vis Fence	5.0	10-Jan-22	20-Jan-22	40.0	Standard 5d TN
1007	RGI	Initial Erosion Control	9.0	10-Jan-22	31-Jan-22	36.0	Standard 5d TN
1010	RGI	Stakes - Lines - Grades	10.0	10-Jan-22	02-Feb-22	35.0	Standard 5d TN
1020	RGI	Road & Drainage Uncl	41.0	24-Jan-22	15-Apr-22	35.0	Standard 5d TN
1025	RGI	Topsoil	5.0	01-Apr-22	08-Apr-22	35.0	Standard 5d TN
1030	RGI	Base Stone	5.0	11-Apr-22	18-Apr-22	35.0	Standard 5d TN
1045	RGI	Prime Coat	1.0	19-Apr-22	19-Apr-22	35.0	Standard 5d TN
1050	RGI	Aggregate Cover	1.0	21-Apr-22	21-Apr-22	35.0	Standard 5d TN
1055	RGI	Asphalt Paving (A-Mix)	2.0	22-Apr-22	25-Apr-22	35.0	Binder >1.5 5d TN
1060	RGI	Asphalt Paving (B-M2 Mix)	2.0	26-Apr-22	28-Apr-22	35.0	Binder >1.5 5d TN
1070	RGI	Temporary Striping	3.0	29-Apr-22	03-May-22	35.0	Standard 5d TN
1075	RGI	Switch Traffic	0.0		03-May-22	35.0	Standard 5d TN

PHASE 2

2005	RGI	Construction Signs	2.0	05-May-22*	06-May-22	35.0	Standard 5d TN
2015	RGI	Clear & Grub	5.0	09-May-22	16-May-22	35.0	Standard 5d TN
2010	RGI	Stakes - Lines - Grades	30.0	09-May-22	27-Jun-22	35.0	Standard 5d TN
2020	RGI	Remove 24" RCP	5.0	17-May-22	24-May-22	46.0	Standard 5d TN
2017	RGI	Road & Drainage Uncl	60.0	17-May-22	23-Aug-22	35.0	Standard 5d TN
2025	RGI	Remove 18" CMP	5.0	26-May-22	03-Jun-22	46.0	Standard 5d TN
2030	RGI	Remove 36" CMP	5.0	06-Jun-22	10-Jun-22	46.0	Standard 5d TN
2035	RGI	Remove 18" CMP	5.0	13-Jun-22	20-Jun-22	46.0	Standard 5d TN
2040	RGI	Remove 15" CMP	5.0	21-Jun-22	27-Jun-22	46.0	Standard 5d TN
2045	RGI	Remove 12" RCP	5.0	28-Jun-22	06-Jul-22	46.0	Standard 5d TN
2050	RGI	Remove 18" CMP	5.0	07-Jul-22	13-Jul-22	46.0	Standard 5d TN
2055	RGI	Remove Asphalt Pvmnt	5.0	14-Jul-22	21-Jul-22	46.0	Standard 5d TN
2090	RGI	Roadway Concrete Cl A	10.0	22-Jul-22	05-Aug-22	46.0	Standard 5d TN
2095	RGI	18" RCP	10.0	08-Aug-22	23-Aug-22	46.0	Standard 5d TN
2060	RGI	Base Stone	10.0	25-Aug-22	08-Sep-22	35.0	Standard 5d TN
2100	RGI	24" RCP	10.0	25-Aug-22	08-Sep-22	46.0	Standard 5d TN
2075	RGI	Prime Coat	5.0	09-Sep-22	16-Sep-22	35.0	Standard 5d TN
2105	RGI	36" RCP	10.0	09-Sep-22	26-Sep-22	46.0	Standard 5d TN
2080	RGI	Aggregate Cover	5.0	19-Sep-22	26-Sep-22	35.0	Standard 5d TN
2110	RGI	Endwalls Concrete	5.0	27-Sep-22	03-Oct-22	46.0	Standard 5d TN
2150	RGI	Sidewalk 4"	20.0	27-Sep-22	25-Oct-22	35.0	Standard 5d TN
2115	RGI	Pipe Endwalls Rebar	5.0	04-Oct-22	10-Oct-22	46.0	Standard 5d TN
2120	RGI	18" Endwall Side Drain	3.0	11-Oct-22	14-Oct-22	46.0	Standard 5d TN
2125	RGI	18" Endwall Cross Drain 3:1	3.0	17-Oct-22	19-Oct-22	46.0	Standard 5d TN
2130	RGI	36" Endwall Cross Drain 3:1	3.0	20-Oct-22	24-Oct-22	46.0	Standard 5d TN



Project Start: 13-Dec-21
 Scheduled Finish: 26-Apr-23
 Data Date: 13-Dec-21
 Date / Time: 22-Dec-21 @14:29



- Actual Work
- Remaining Work
- Critical Remaining Work
- ◆ Milestone

